



NIKE GRIND

MATERIALS

APRIL 2022



NIKE GRIND MATERIALS

INTRODUCTION	1
WHAT IS NIKE GRIND	2
MATERIAL TYPES	3
MATERIAL SPECS	
RUBBER	5
PU FOAM	8
EVA FOAM	10
LEATHER	13
TEXTILES	15
THERMOPLASTICS	17
FINISHED MATERIALS	20
EXAMPLES OF PARTNER APPLICATIONS	
SURFACES	22
EXAMPLES OF SURFACE INSTALLATIONS	23
PRICING & ORDERING	24

TRANSFORMING LIMITED RESOURCES INTO UNLIMITED POTENTIAL

Created by the regeneration of manufacturing scrap and end-of-life shoes, Nike Grind materials are high-performance, long-lasting and environmentally conscious, providing the ultimate foundation for the next generation of sustainable design.



WHAT IS NIKE GRIND?

ASIA
MANUFACTURING OFFCUTS



U.S. & BELGIUM
END-OF-LIFE SHOES



MATERIAL TYPES



RUBBER



PU FOAM



EVA FOAM



LEATHER



TEXTILES



THERMOPLASTICS

MATERIAL SPECS

MATERIAL TYPE: RUBBER



Cured rubber outsoles and flashings optionally processed to various granulate sizes.

POTENTIAL APPLICATIONS

A wide range of properties suitable for applications such as sports surfaces, flooring and construction materials.

PERFORMANCE CHARACTERISTICS

- Low liquid absorption
- Nike rubber formulations use 90% Nike environmentally preferred rubber
- Sound and force absorption

POST-INDUSTRIAL RUBBER



Rubber Granules 3–6 mm

POST-CONSUMER RUBBER



EU Post-Consumer Rubber 1–4 mm

The images above are examples of Post-Industrial and Post-Consumer Rubber materials. See the following pages for a complete list of available Rubber materials.

MATERIAL TYPE: RUBBER

RUBBER OUTSOLE COMPONENTS

Cured rubber materials in the form of outsole components chopped to a variety of sizes.

SIZE: Mixed (~150 mm x ~80 mm x ~4 mm, ~30 mm x ~30 mm x ~30 mm, ~30 mm x ~30 mm x ~2 mm, ~50 mm x ~80 mm x ~2 mm, ~120 mm x ~100 mm x ~2 mm, ~120 mm x ~100 mm x ~30 mm)

COLOR: Light (no black), dark (no white), mixed (no color separation)

SOURCE TYPE: Footwear manufacturing

SOURCE LOCATION: China, Indonesia, Vietnam

SKU: NG07ROC



Detail View

RUBBER FLASHINGS

Cured rubber materials in the form of flashings.

SIZE: 1 mm x (150–500 mm)

COLOR: Light (no black), dark (no white), mixed (no color separation)

SOURCE TYPE: Footwear manufacturing

SOURCE LOCATION: China, Indonesia, Vietnam

SKU: NG08RF



Detail View

RUBBER GRANULES

Cured rubber outsoles and flashings processed to various granulate sizes.

SIZE: 1–3 mm, 3–6 mm (shown below), 10–30 mesh, 30–40 mesh

COLOR: Light (no black), dark (no white), mixed (no color separation)

SOURCE TYPE: Footwear manufacturing

SOURCE LOCATION: China, Indonesia, Vietnam

SKUS: NG09R13, NG10R36, NG11R10, NG11R14, NG12R30



Detail View

MATERIAL TYPE: RUBBER

RUBBER POWDER

Cured rubber outsoles and flashings processed into a powder form.

- SIZE: 40 mesh and under
- COLOR: Light (no black), dark (no white), mixed (no color separation)
- SOURCE TYPE: Footwear manufacturing
- SOURCE LOCATION: China, Indonesia, Vietnam
- SKU: NG13RP4



Detail View

POST-CONSUMER RUBBER

Rubber material separated from end-of-life shoes, recaptured and processed to various granulate sizes.

- SIZE: EU: 1 - 4mm (shown below), US: 3 - 5mm, 1 - 3mm
- COLOR: Mixed
- SOURCE TYPE: End-of-life footwear
- SOURCE LOCATION: Belgium, United States
- SKUS: NG28R3-US, NG28R5-US, NG28R36-EU



Detail View



MATERIAL TYPE: **PU FOAM**



Polyurethane foam laminated with textile backing material.

POTENTIAL APPLICATIONS

A wide range of properties suitable for industries such as carpet padding, automotive and furniture.

PERFORMANCE CHARACTERISTICS

- Lightweight
- Compressible
- Soft, exhibiting cushioning characteristics
- Shock-absorbing

POST-INDUSTRIAL PU FOAM



Laminated PU Foam

The image above is an example of Post-Industrial PU Foam material. See the following page for additional details.

MATERIAL TYPE: PU FOAM

PU LAMINATED FOAM

Polyurethane foam laminated with textile backing material.

COLOR: Varies

SOURCE TYPE: Footwear manufacturing

SOURCE LOCATION: China, Indonesia, Vietnam

SKU: NG06LPU



Detail View



MATERIAL TYPE: EVA FOAM



Ethylene-vinyl acetate (EVA) foam materials from footwear midsoles available in various shapes.

POTENTIAL APPLICATIONS

A wide range of properties for applications such as sports surfaces, flooring, furniture design and construction materials.

PERFORMANCE CHARACTERISTICS

- Flexibility
- Shock-absorption qualities
- Resistant to stress-cracking
- Low liquid absorption
- Thermal insulation

POST-INDUSTRIAL EVA FOAM



EVA Components

POST-CONSUMER EVA FOAM



EU Post-Consumer Foam

The images above are examples of Post-Industrial and Post-Consumer Foam materials. See the following pages for a complete list of available EVA Foam materials.

MATERIAL TYPE: EVA FOAM

EVA INJECTIONS

Ethylene-vinyl acetate (EVA) foam materials from footwear midsoles are available as injection scraps in tubular pieces.

SIZE: ~10 mm x (up to 300 mm)
COLOR: Varies
SOURCE TYPE: Footwear manufacturing
SOURCE LOCATION: China, Indonesia, Vietnam
SKU: NG15EVAI



Detail View

EVA FLASHINGS

Ethylene-vinyl acetate (EVA) foam materials from footwear midsoles are available as flashing in long strips.

SIZE: 10 mm x (300–500 mm)
COLOR: Varies
SOURCE TYPE: Footwear manufacturing
SOURCE LOCATION: China, Indonesia, Vietnam
SKU: NG14EVAF

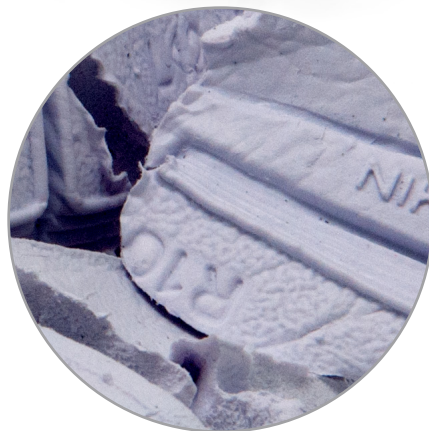


Detail View

EVA COMPONENTS

Ethylene-vinyl acetate (EVA) foam materials from footwear midsoles are available as components in roughly chopped pieces.

SIZE: Roughly chopped
COLOR: Varies
SOURCE TYPE: Footwear manufacturing
SOURCE LOCATION: China, Indonesia, Vietnam
SKU: NG18EVAC



Detail View

MATERIAL TYPE: EVA FOAM

EVA LAMINATED SCRAPS

Ethylene-vinyl acetate (EVA) foam sheets laminated with polyester fabric backing from footwear sockliners (insoles) manufacturing.

SIZE: Roughly chopped scraps

COLOR: Mixed

SOURCE TYPE: Footwear manufacturing

SOURCE LOCATION: China, Indonesia, Vietnam

SKU: NG19LEVA



Detail View

POST-CONSUMER FOAM

EVA foam material separated from end-of-life shoes, recaptured and processed into granulate form. Includes trace amounts of rubber and upper textile.

SIZE: 1–4 mm (EU), 1–5 mm (US)

COLOR: Mixed

SOURCE TYPE: End-of-life footwear

SOURCE LOCATION: Belgium, United States

SKU: NG29EVA-EU, NG29F-US



Detail View



MATERIAL TYPE: **LEATHER**



Full grain suede, split grain with polyurethane (PU) coating, and synthetic leather scraps from the manufacture of footwear uppers.

POTENTIAL APPLICATIONS

A wide range of properties for applications such as furniture, automotive industry and leather accessories.

PERFORMANCE CHARACTERISTICS

- Tensile strength
- Resistant to mildew
- Fire resistant

POST-INDUSTRIAL LEATHER



Split Leather Coated Scraps



Synthetic Leather Scraps

The images above are examples of Post-Industrial Leather materials. See the following page for a complete list of available Leather materials.

MATERIAL TYPE: LEATHER

FULL GRAIN LEATHER SCRAPS

Full grain leather cutting scraps with a pigmented, aniline or crust finish leftover from the manufacture of footwear uppers.

SIZE: Cutting scraps, lightly processed

COLOR: Varies

SOURCE TYPE: Footwear manufacturing

SOURCE LOCATION: China, Indonesia, Vietnam

SKU: NG24FGL



Detail View

SPLIT LEATHER COATED SCRAPS

Split leather coated scraps with polyurethane (PU) coating leftover from the manufacture of footwear uppers.

SIZE: Cutting scraps, lightly processed

COLOR: Varies

SOURCE TYPE: Footwear manufacturing

SOURCE LOCATION: China, Indonesia, Vietnam

SKU: NG23SLC



Detail View

SYNTHETIC LEATHER SCRAPS

Synthetic leather is a leather-like synthetic textile or non-woven material coated in polyurethane (PU). May include backing paper.

SIZE: Cutting scraps, lightly processed

COLOR: Varies

SOURCE TYPE: Footwear manufacturing

SOURCE LOCATION: China, Indonesia, Vietnam

SKU: NG25SL



Detail View

MATERIAL TYPE: TEXTILES



Post-industrial textile scraps collected from the manufacture of footwear and apparel, or post-consumer textile fluff recovered from end-of-life shoes.

POTENTIAL APPLICATIONS

A wide range of properties for applications such as cushioning, automotive industry and recycled yarn.

PERFORMANCE CHARACTERISTICS

- Colorfastness
- Air permeability
- Moisture transmission
- Compressability

POST-INDUSTRIAL TEXTILE



Upper Textile Footwear Scrap

POST-CONSUMER TEXTILE



Post-Consumer Fluff

The images above are examples of Post-Industrial and Post-Consumer Textile materials. See the following page for a complete list of available Textile materials.

MATERIAL TYPE: TEXTILES

UPPER TEXTILE FOOTWEAR SCRAP

Various mixed textile materials including polyester, cotton, and other textile types and blends collected in the production of footwear.

SIZE: ~ 3 mm x 50 mm x 100 mm
COLOR: Mixed
SOURCE TYPE: Footwear manufacturing
SOURCE LOCATION: China, Indonesia, Vietnam
SKU: NG20MFT



Detail View

TEXTILE APPAREL SCRAP

Various textile materials including polyester, cotton, elastane, nylon and other textile types and blends collected in the production of apparel.

SIZE: ~ 1 mm x 50 mm x 200 mm
COLOR: Varies
SOURCE TYPE: Apparel manufacturing
SOURCE LOCATION: China, Vietnam
SKU: NG04AP-US

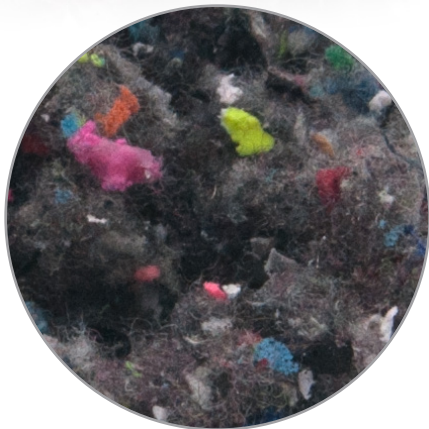


Detail View

POST-CONSUMER FLUFF

Ground textile material recovered from the separation of end-of-life shoes.

SIZE: N/A
COLOR: Grey with colored flecks
SOURCE TYPE: End-of-life footwear
SOURCE LOCATION: Belgium, United States
SKU: NG03F-EU, NG03FB-US



Detail View

MATERIAL TYPE: THERMOPLASTICS



Thermoplastics from manufacturing scraps and post-consumer footwear.

POTENTIAL APPLICATIONS

A wide range of properties for applications such as flooring, carpet backing and furniture.

PERFORMANCE CHARACTERISTICS

- Elasticity
- Shear strength
- Abrasion resistance
- Resistant to oil and greases
- Ability to be melted and re-extruded

POST-INDUSTRIAL THERMOPLASTIC



Laminated TPU

POST-CONSUMER THERMOPLASTIC



Post-Consumer TPU Granulate

The images above are an example of Post-Industrial and Post-Consumer Thermoplastic materials. See the following page for a complete details.

MATERIAL TYPE: THERMOPLASTICS

LAMINATED TPU

TPU (thermoplastic polyurethane) with Nylon.

SIZE: 3–6 mm

COLOR: White

SOURCE TYPE: Footwear manufacturing

SOURCE LOCATION: United States

SKU: NG26LTPU-US



Detail View

POST-CONSUMER TPU GRANULATE

TPU (thermoplastic polyurethane) chips from ground up cleats.

SIZE: 1–3 mm (US), 3–5 mm (US), 1–4mm (Belgium)

COLOR: Mixed Color

SOURCE TYPE: End-of-life footwear

SOURCE LOCATION: United States

SKU: NGTPU3-US, NGTPU5-US, NG02TPU-EU, GV02TPUB-EU



Detail View

FINISHED MATERIALS

MATERIAL TYPE: FINISHED MATERIALS

STEPAHEAD*

Carpet padding made from Nike Grind laminated PU foam by FutureFoam.

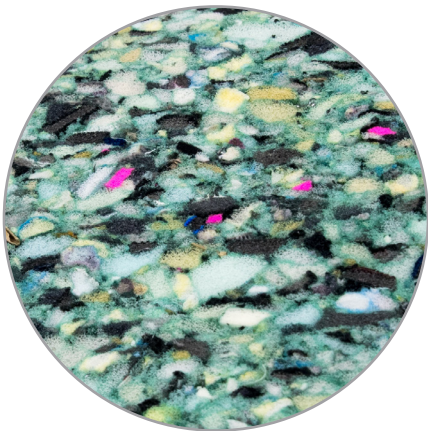
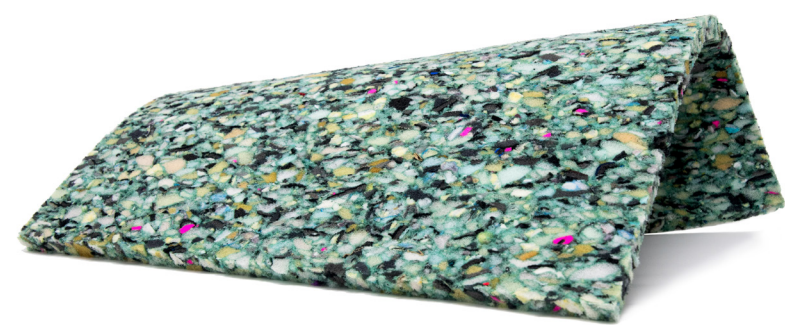
SIZE: Made to order

COLOR: Green

SOURCE TYPE: Carpet underlayment manufacturing

SOURCE LOCATION: United States

SKU: NG33FF-US



Detail View

ACOUSTICORK

Noise reduction and subfloor prep underlayment manufactured with cork and Nike Grind EVA by Amorim.

SIZE: 100 square foot roll (30.46' x 39.4" x 0.070")

COLOR: Multi-colored

SOURCE TYPE: Cork product production

SOURCE LOCATION: Portugal

SKU: NG32CF-P



Detail View

ENR LEATHER*

Leather material made with a blend of tannery shavings and Nike leather scraps.

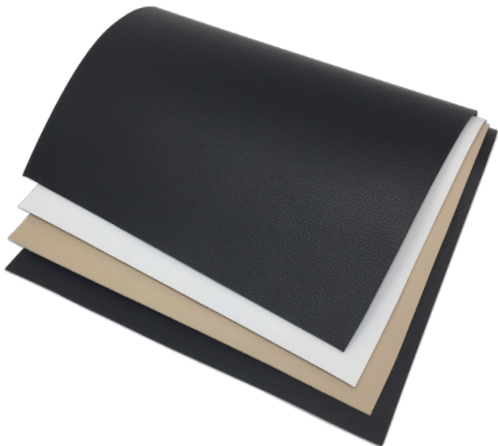
SIZE: 56" wide (20 m X 1 roll package)

COLOR: Any color

SOURCE TYPE: Natural recycled leather

SOURCE LOCATION: Korea

SKU: N/A



Detail View

*Not available for use in Nike products.



EXAMPLES OF PARTNER APPLICATIONS

INNOVATIVE SURFACES ENGINEERED FOR PERFORMANCE

Surfaces made with Nike Grind are high-performance, sustainable alternatives to conventional options. From football fields to weight rooms, basketball courts to playgrounds, these surfaces are designed by our partners to maximize playability while reducing environmental impact.

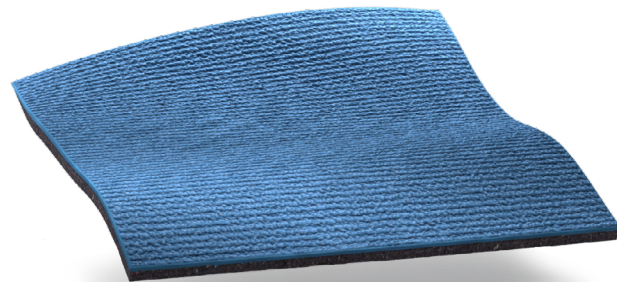
TURF FIELDS



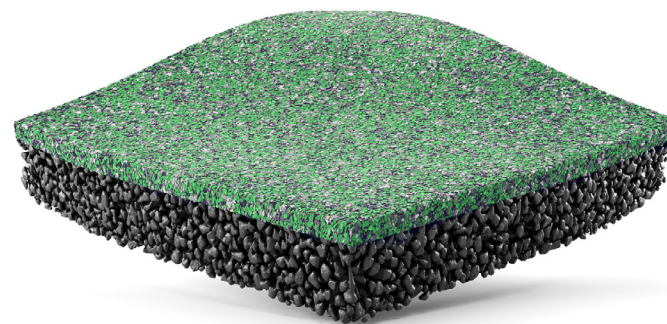
COURTS



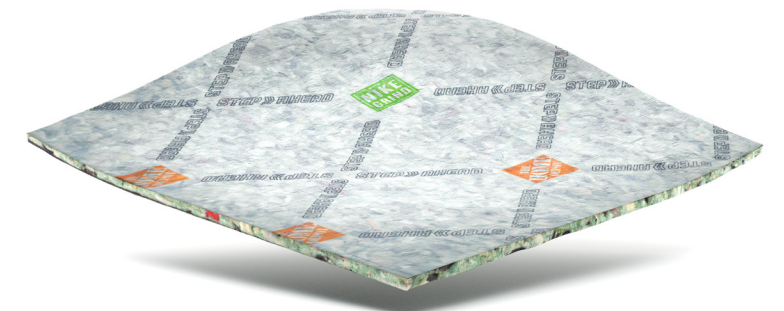
HOME GYM RUBBER TILES



TRACKS



PLAYGROUNDS & WALKWAYS



CARPET PADDING

EXAMPLES OF SURFACE INSTALLATIONS



OUTDOOR TURF FIELD COMPLEX



PERFORMANCE WOOD FLOORING



HEAVY-USE GYM FLOORING



WALKWAY FOR PARALYMPIC TRACK SURFACE



OUTDOOR TRACK SURFACE



CUSHIONED PLAYGROUND SURFACE

PRICING & ORDERING PROCESS

TO OBTAIN SAMPLES, DISCUSS GRANULATE SIZE OPTIONS OR CONFIRM PRICING,
PLEASE CONTACT US AT NIKEGRIND@NIKE.COM.

If needed, we will connect you with the appropriate person from Nike's in-country field team who will support order placement, freight questions and any additional logistics issues.





VISIT US AT [NIKEGRIND.COM](https://nikegrind.com)